



23.03.2017

# SKANDINAVISCHER SCHULBAU - LEARNING LANDSCAPES

**C.F. Møller Architects**

**Julian Weyer**

**Partner, Architect maa.**

**C.F. Møller**



C.F. Møller



C.F. Møller

# C.F. Møller

## SERVICES



> ARCHITECTURE



> LANDSCAPE



> DESIGN



> HEALTHCARE



> MANAGEMENT

## A HOLISTIC APPROACH

# RULL – DIE SECHS PRINZIPIEN



**Entwicklungs-  
stufen**



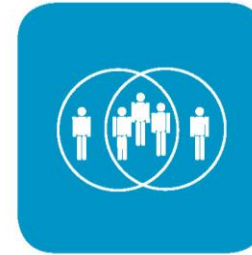
**Inspirierende  
Räume**



**Innovation &  
Interdisziplinär  
Lernen**



**Physische  
Aktivität**



**Gemeinschaft &  
Individualität**



**Informations-  
Technologie**



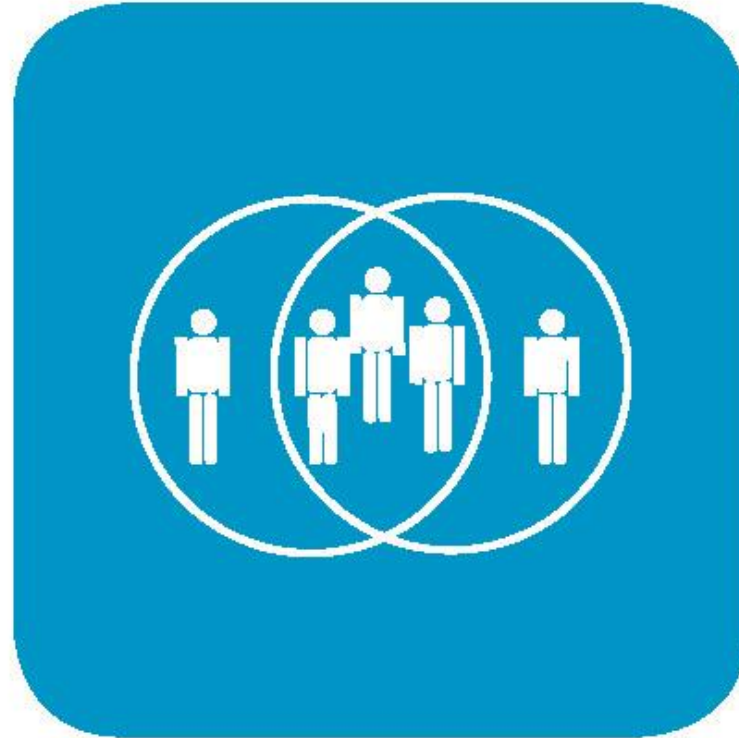


C.F. Møller



C.F. Møller





## Gemeinschaft & Individualität

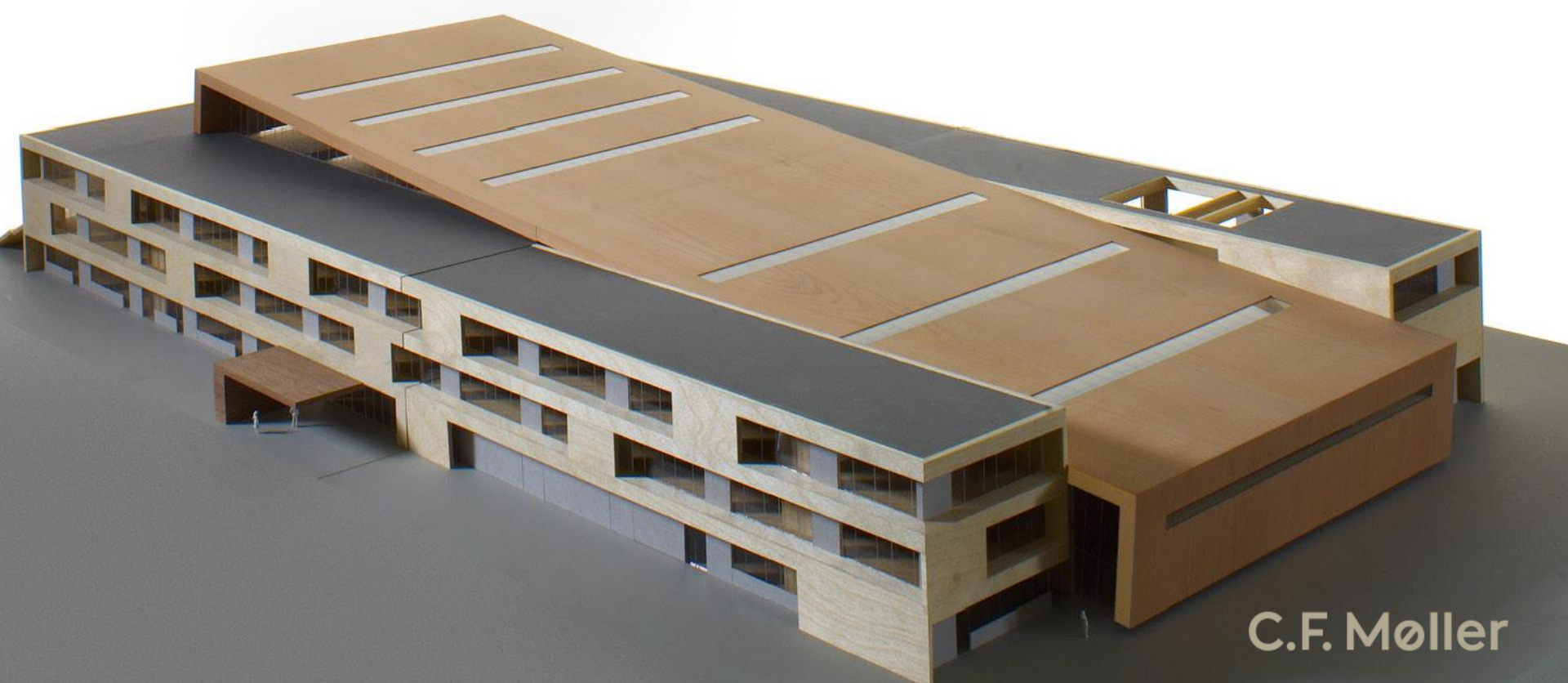




C.F. Møller



C.F. Møller



C.F. Møller



C.F. Møller



Der må ikke spises og drikkes ved computerne!



C.F. Møller







C.F. Møller



071

072

080

088

096

136

144

152

160

200

208

216

224

4

2

0

3

C.F. Møller



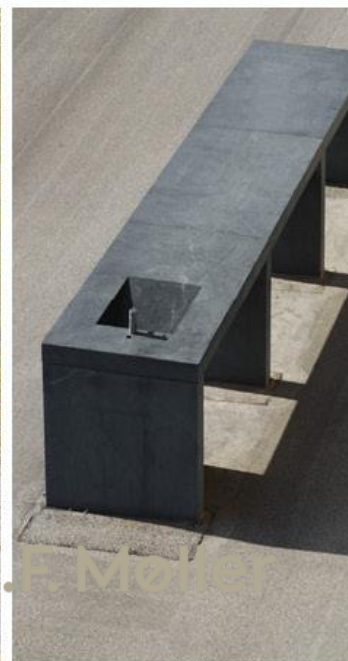
C.F. Møller



C.F. Møller



C.F. Møller



C.F. Møller

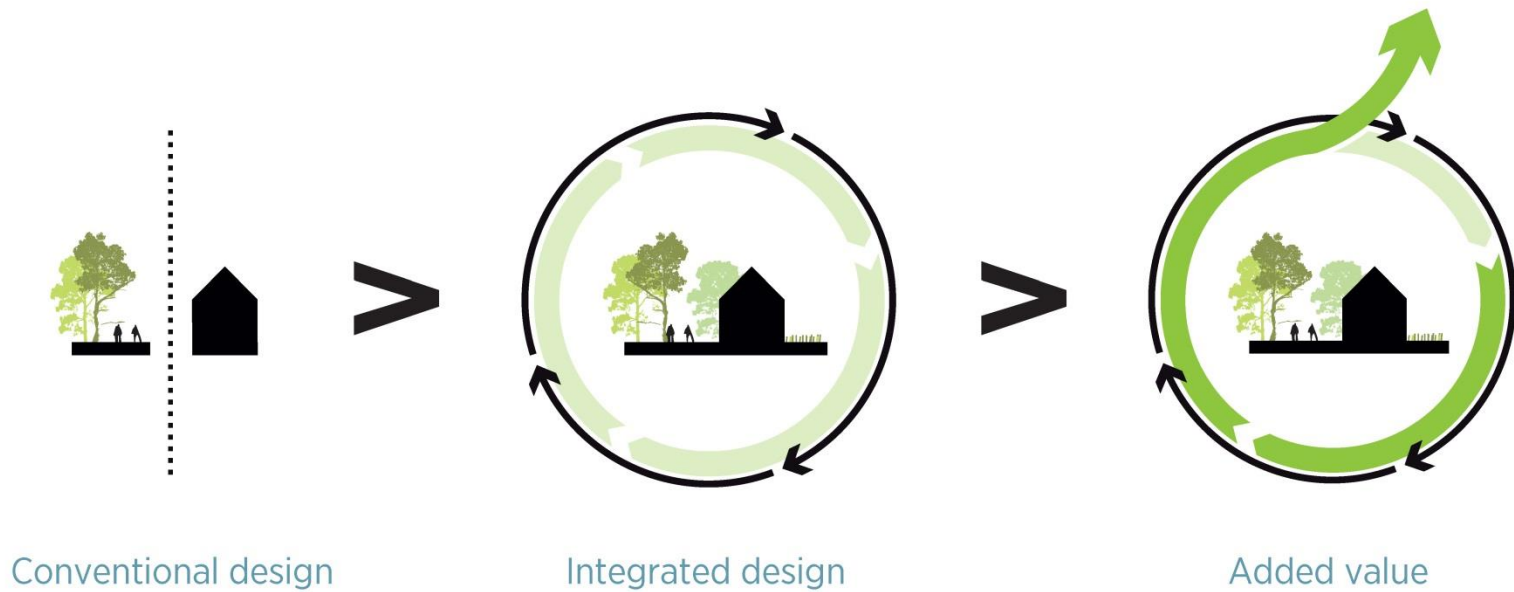




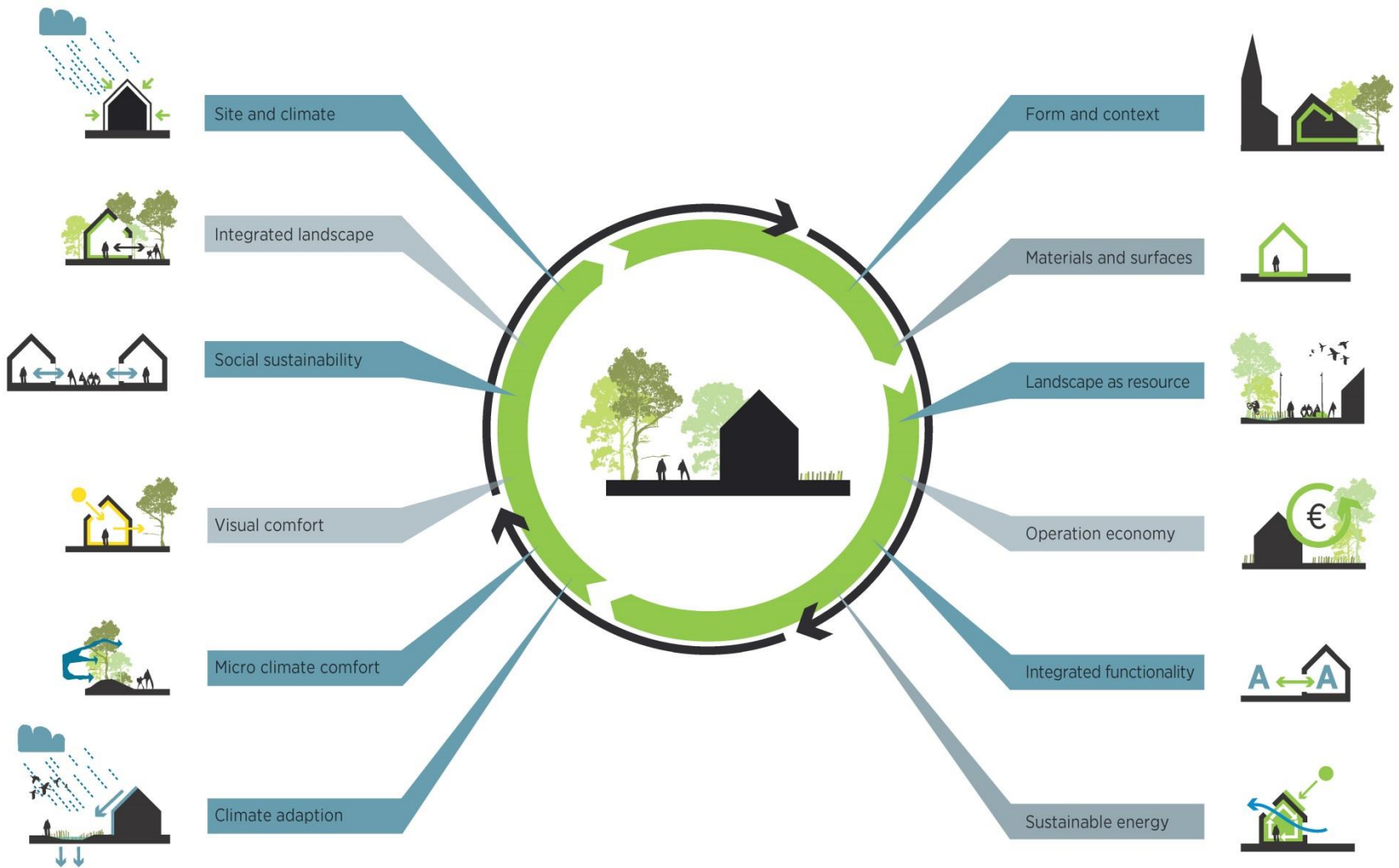


C.F. Møller

# DESIGNPROCES / Building AND Landscape

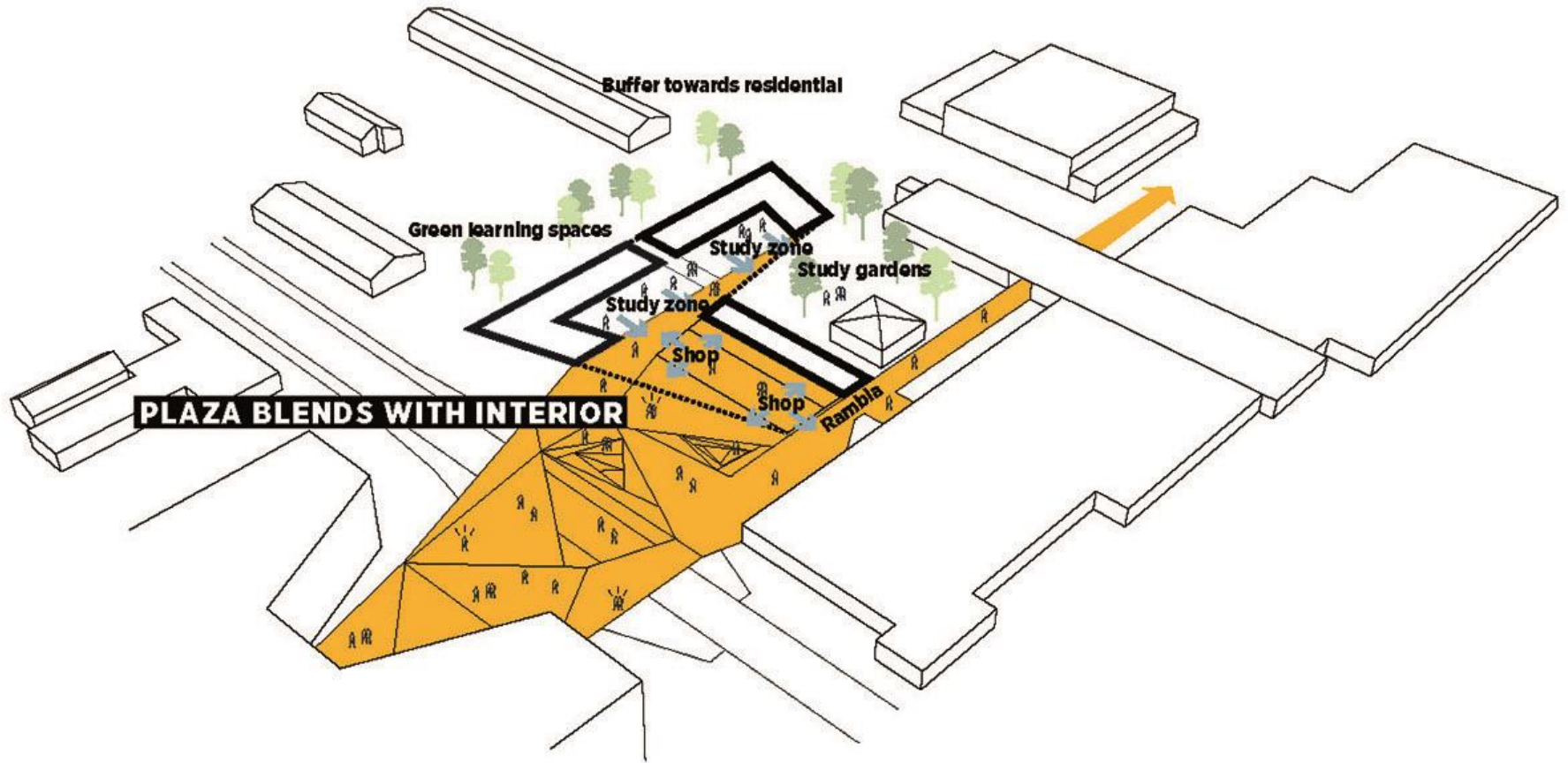


# INTEGRATED DESIGN / Benefits

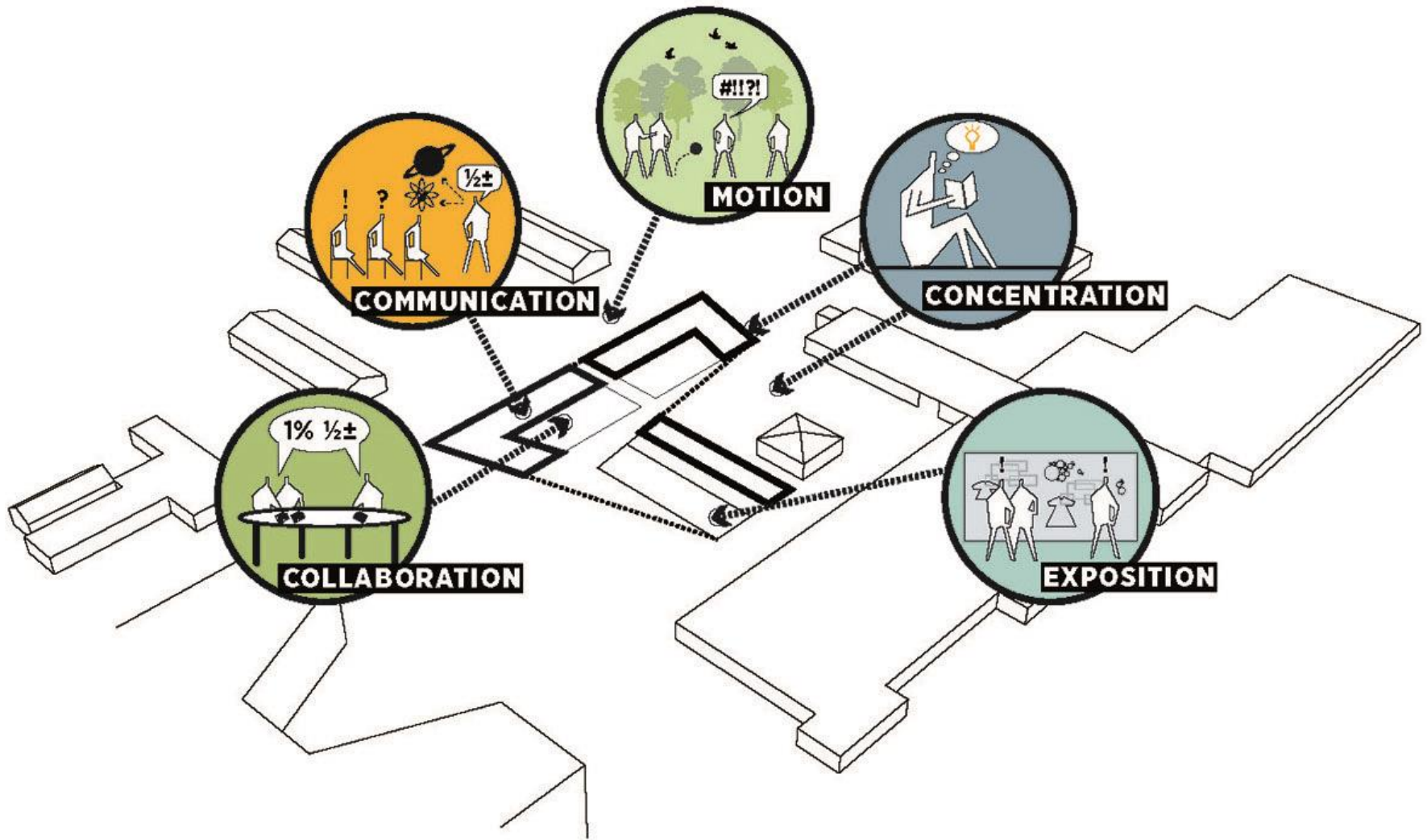




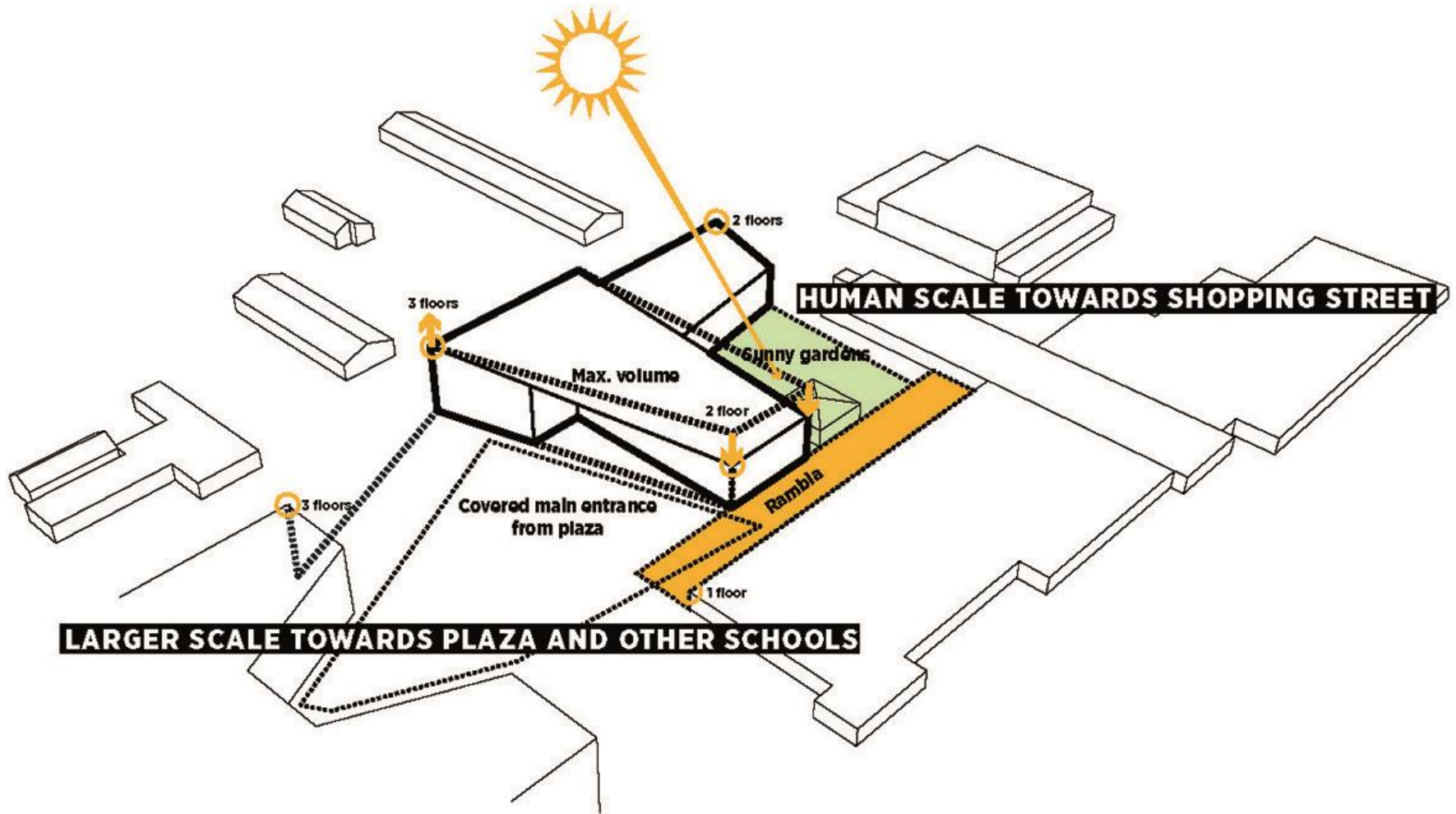
C.F. Møller



**URBAN PLAZA: CONNECTS INTERIOR AND EXTERIOR**



**LEARNING ENVIRONMENTS: VARIED SPACES AND FLEXIBLE LEARNING MODES**



**ADAPTION TO CONTEXT: SCALE AND SUNLIGHT**



HERNINGSHOLM  
ERHVERVSSKOLE

AND OPENING

HERNISEK

C.F. Møller





C.F. Møller



The diagram shows a 3D perspective of a building facade with several key features: a horizontal solar screen on the top surface of the south facade, a transparent north facade, a vertical solar screen on the east and west facades, a covered main access with an overhang, and a massive section towards the Rambla. Arrows from sun icons indicate the direction of solar radiation hitting these features.

### **HORIZONTAL SOLAR SCREEN**

On south facade - protection from high solar angles and reflection of light into learning spaces

### **TRANSPARENT NORTH FACADE**

Opens building towards the gardens

### **VERTICAL SOLAR SCREEN**

On east and west facades  
- protection from low solar angles

### **COVERED MAIN ACCESS**

Overhang shades transparent facade

### **MASSIVE TOWARDS RAMBLA**

Exposes shop windows

**FACADES: 360° INTEGRATED DESIGN**



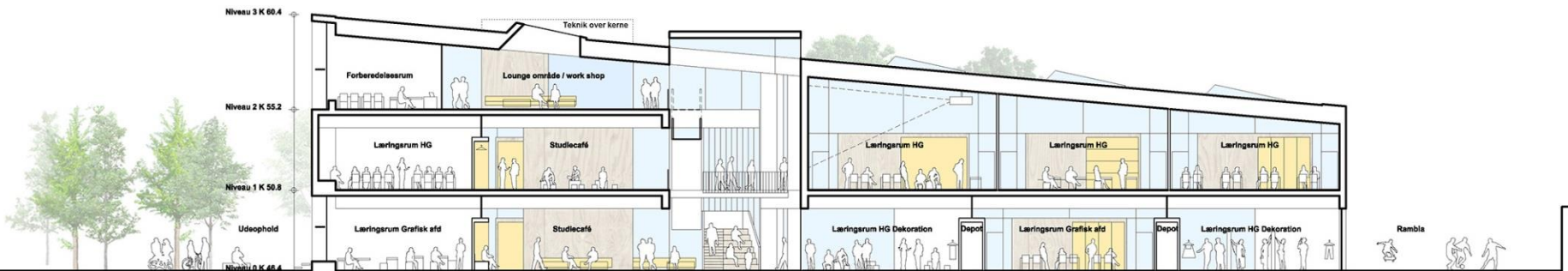
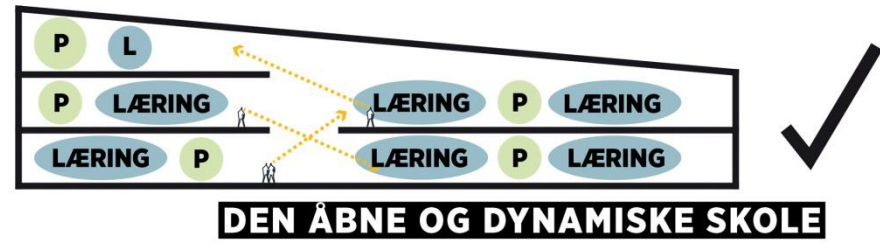
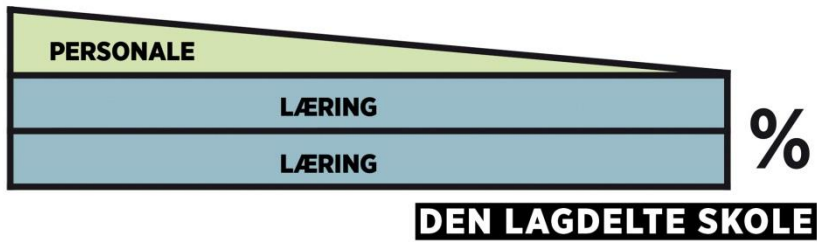
MÅLL ST

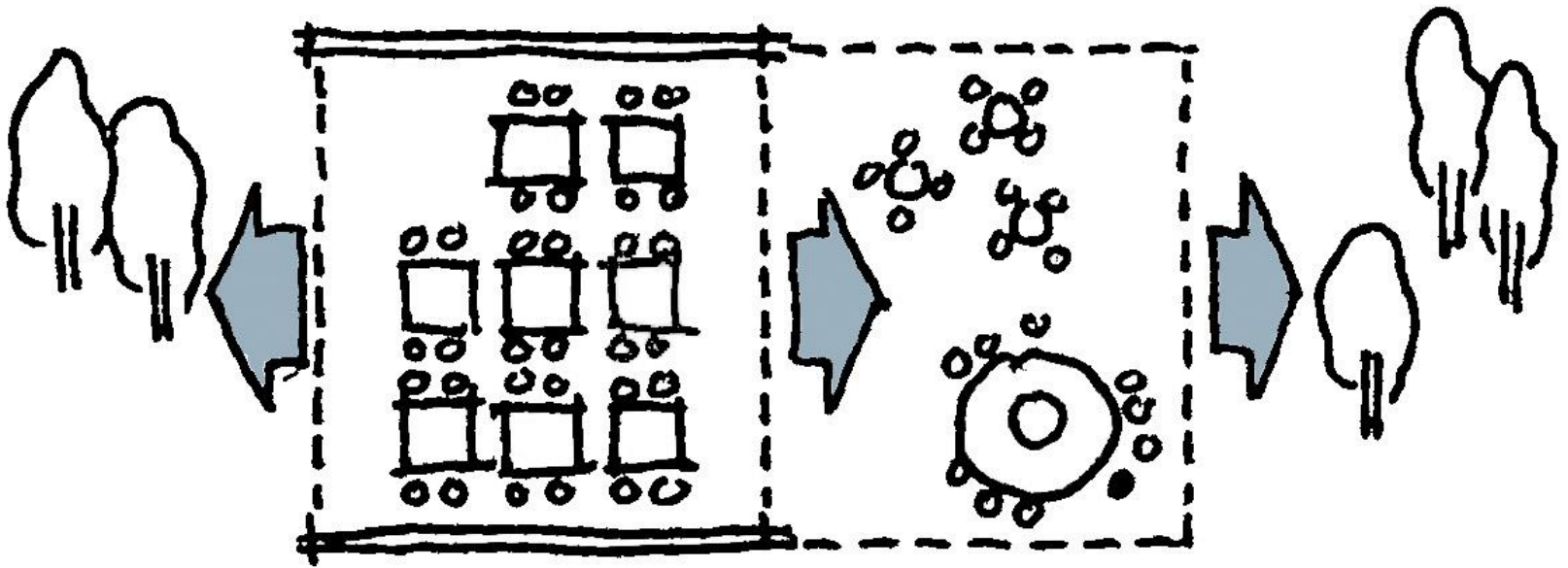
HERNINGSHOLM ERHVERVSSKOLE

OUTLET

FLAGSTAD

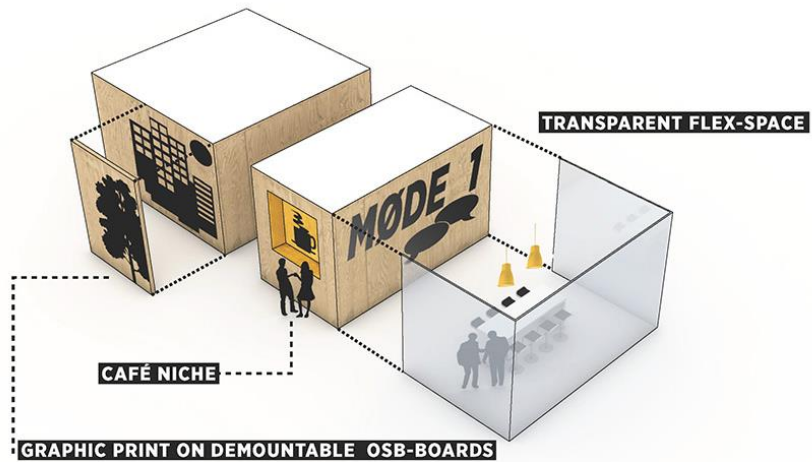
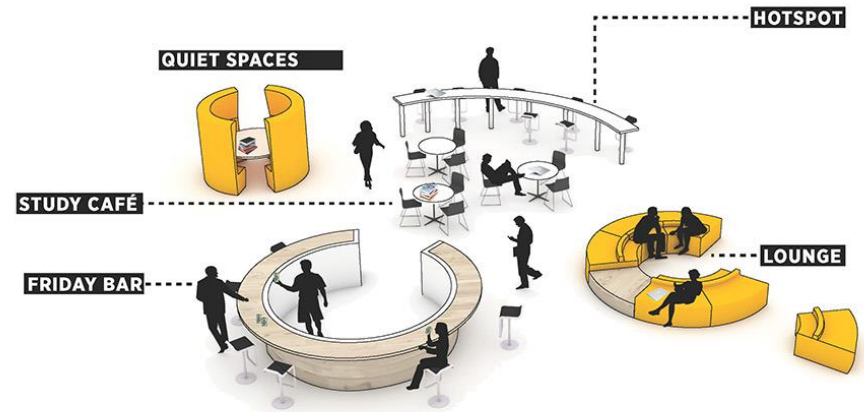
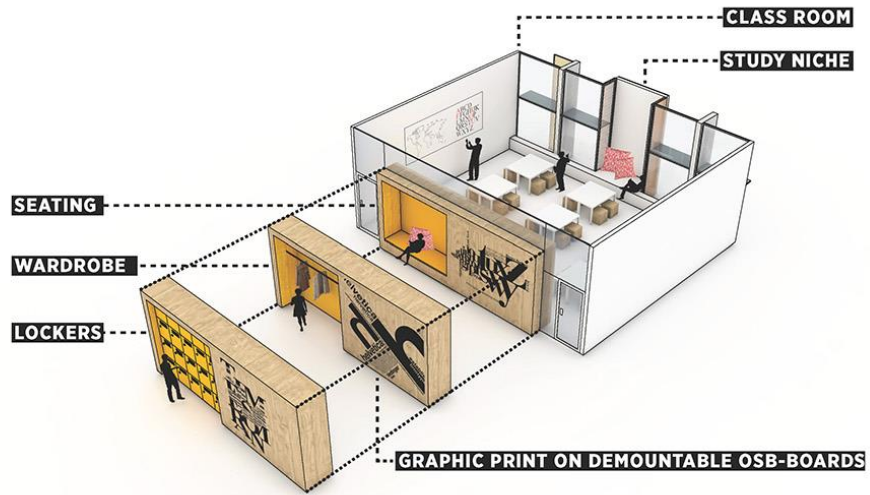
C.F. Møller

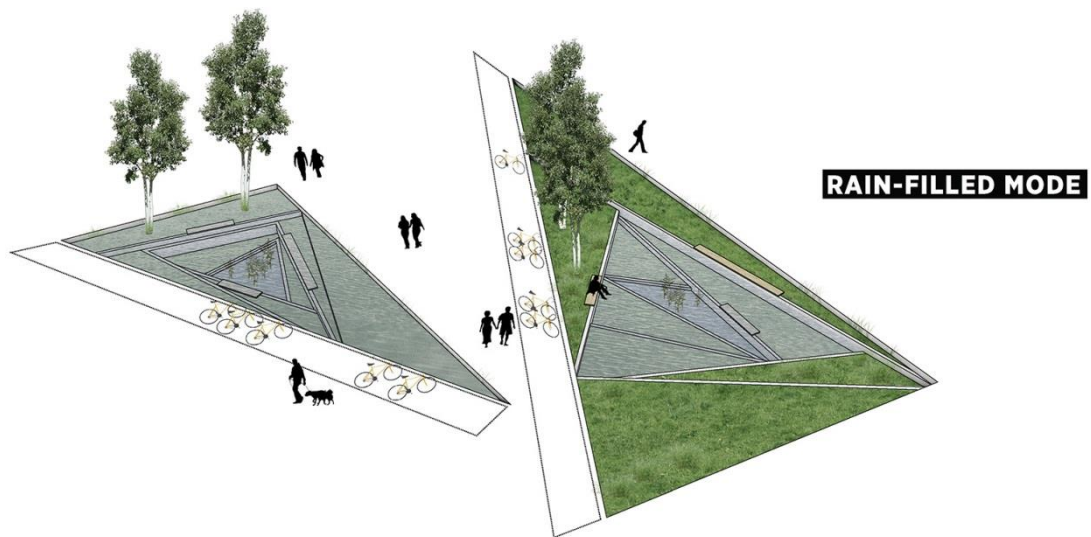
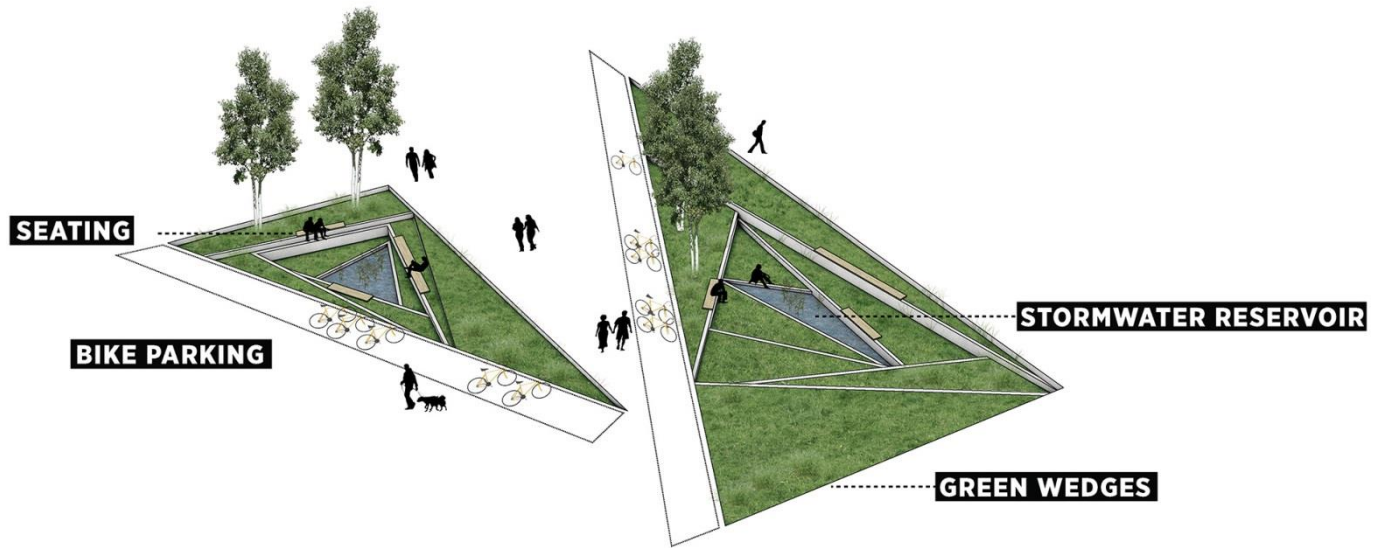






C.F. Møller









C.F. Møller

### SOLAR SCREENS

- South-facing overhang shades facades
- Horizontal/Vertical fins
- Perforated metal shutters screen off sun while preserving views in and out
- Shading planting
- Interior sun screen against glare

### GOOD DAYLIGHTING

- Fins reflect daylight deep into learning areas for even daylight distribution

### LIGHT / VENT STRIP BETWEEN SPACES

- Better overall daylight
- Spaces lit from multiple aspects

### COMMON AREAS

- Recreational furniture
- Spaces for collaboration / interaction
- Niches for concentration

### NATURAL VENTILATION

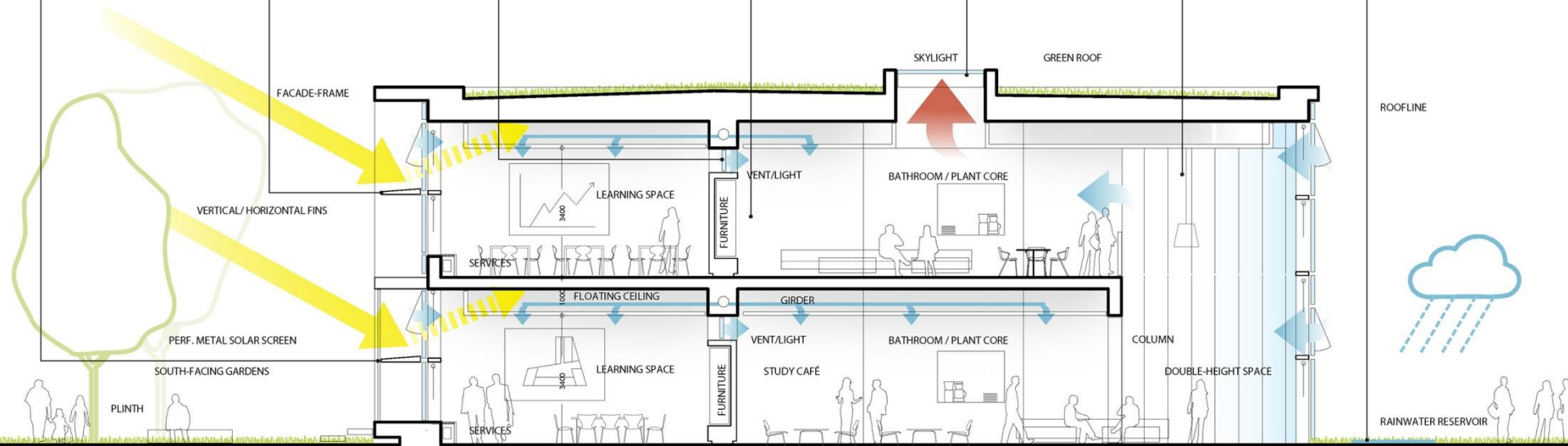
- Reduces energy loads
- Improves indoor climate
- Improves comfort

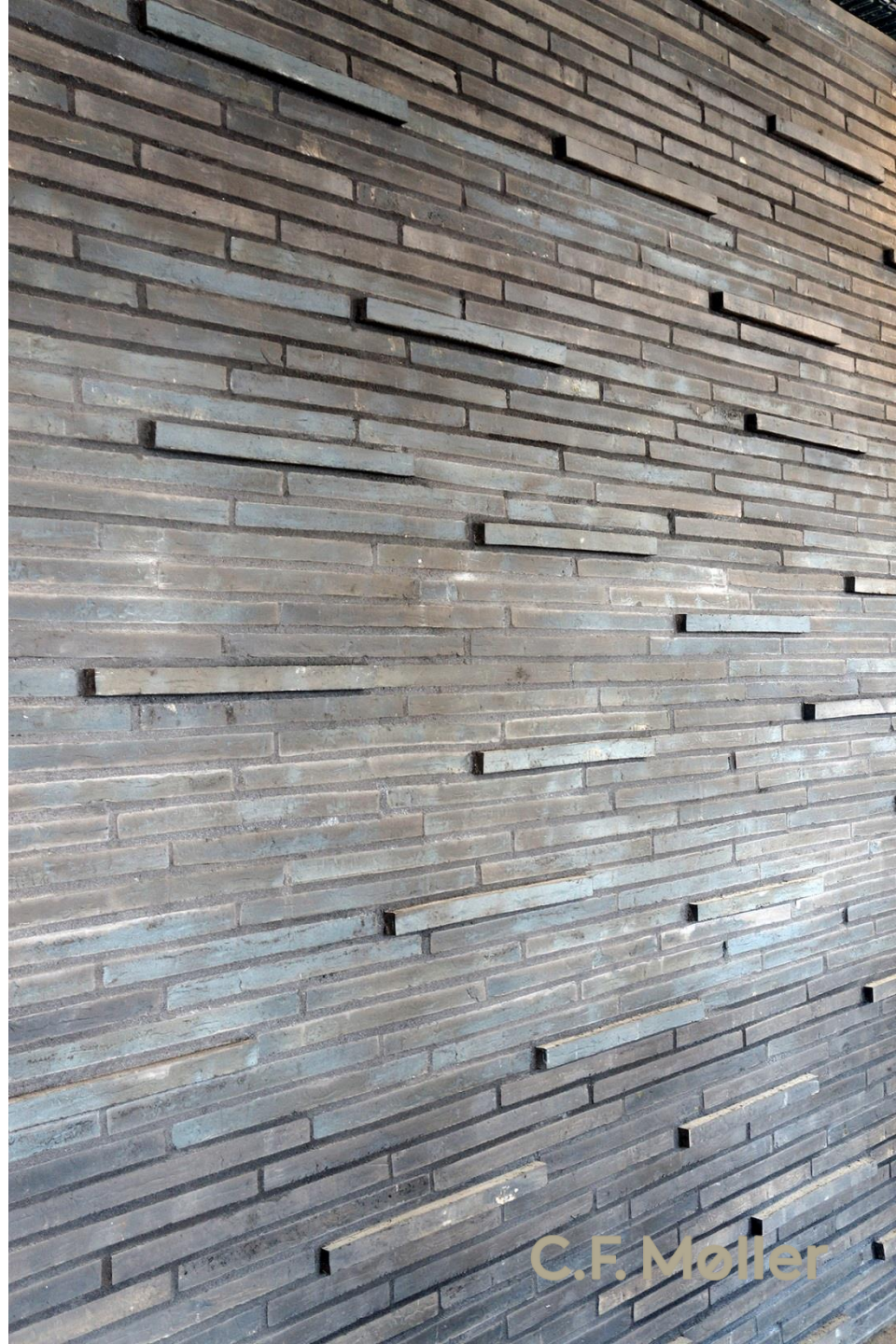
### THERMAL STACK-EFFECT

- Double- and triple-height atrium enables natural ventilation strategy

### RAINWATER RESERVOIRS

- Stormwater handling
- Aquifer replenishing
- Improved biodiversity





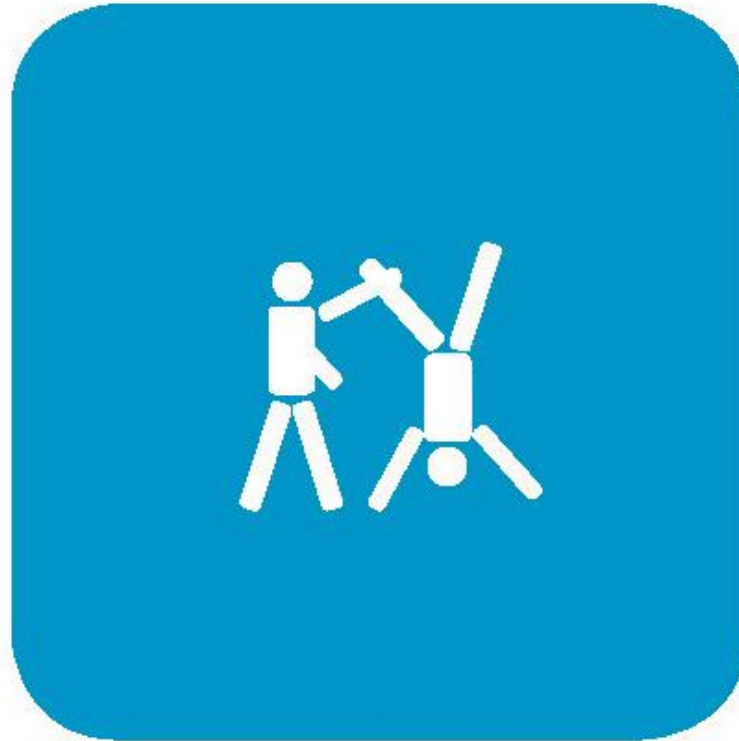
C.F. Møller



C.F. Møller



C.F. Møller



## Physische Aktivität





C.F. Møller





C.F. Møller

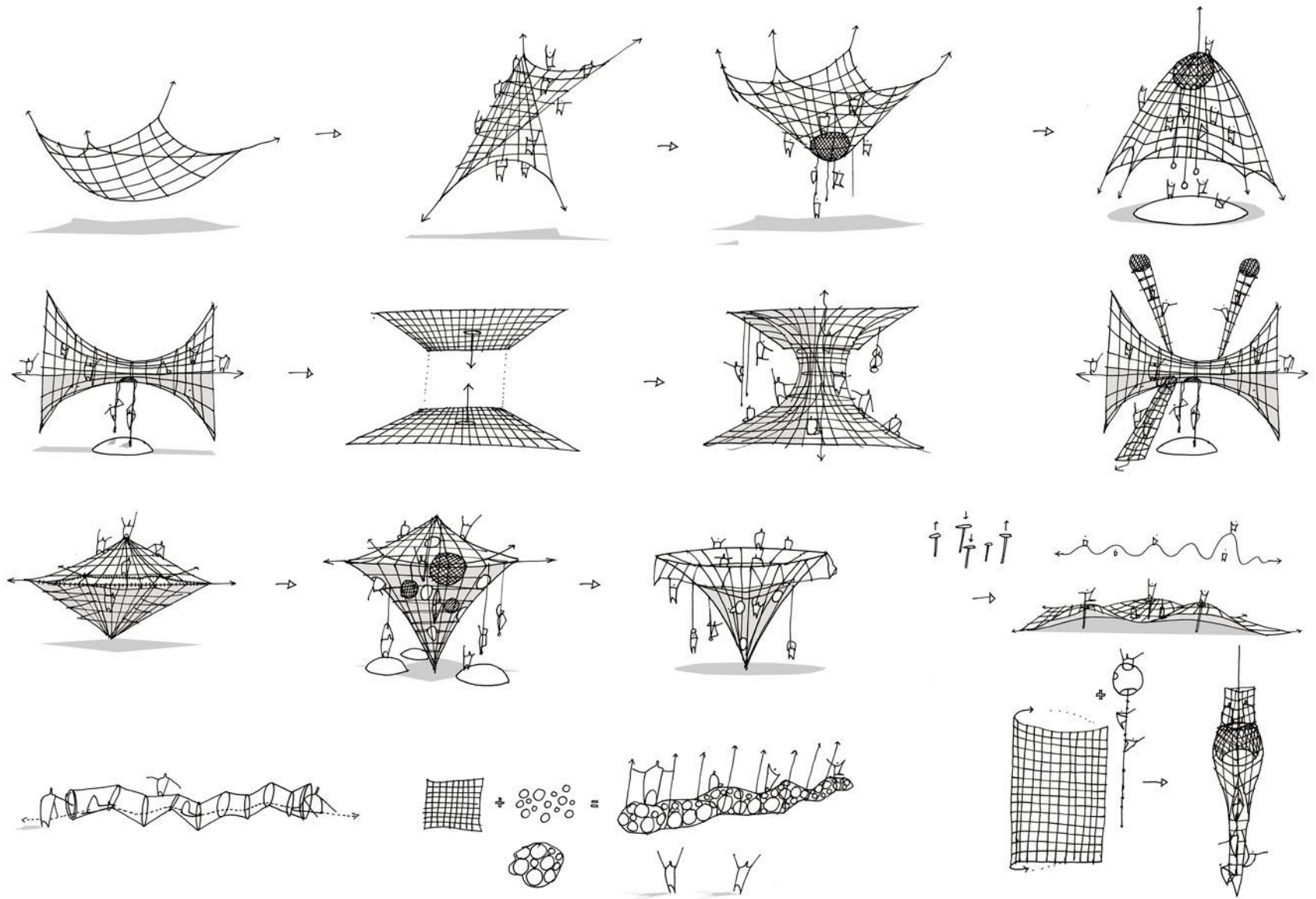




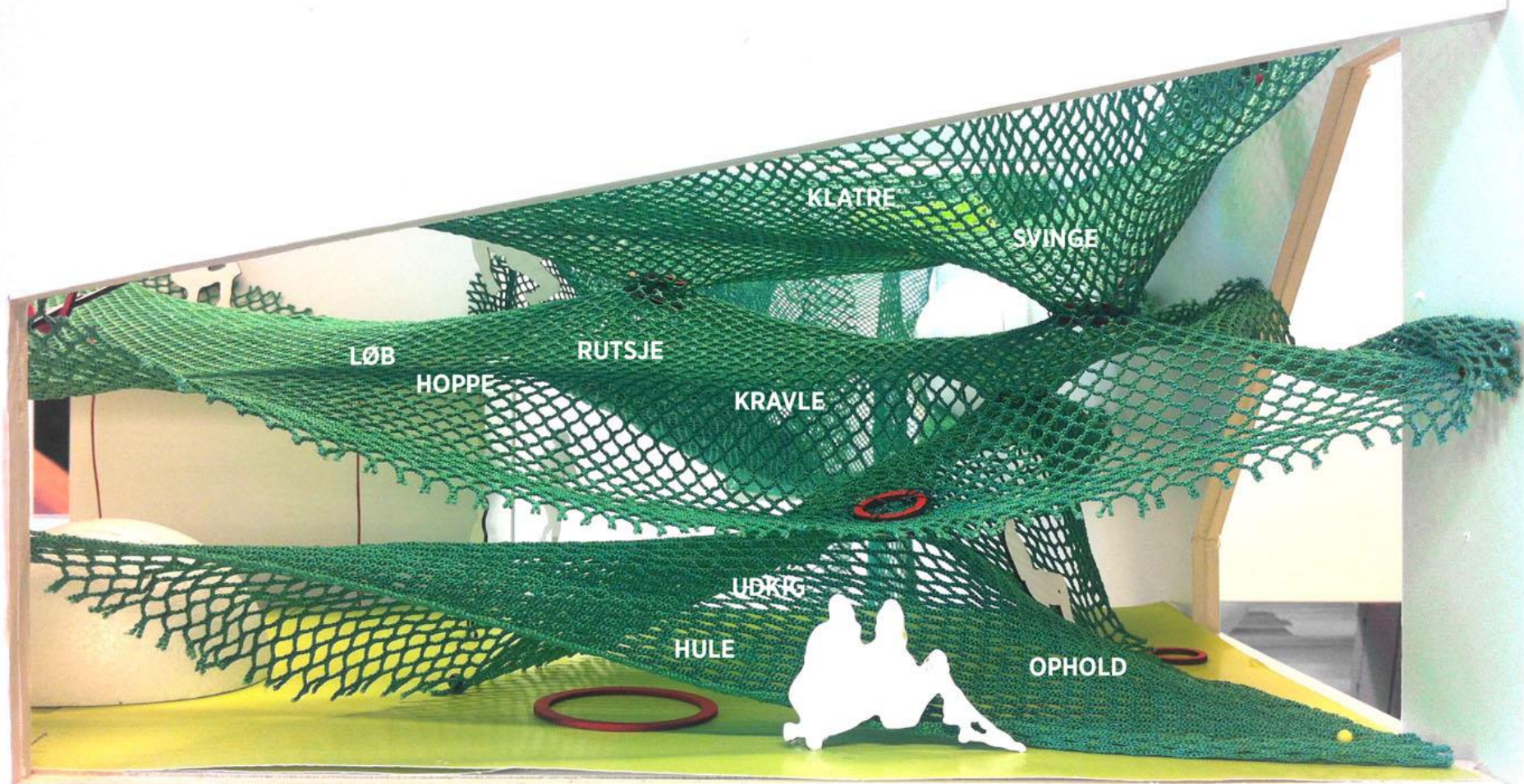


C.F. Møller

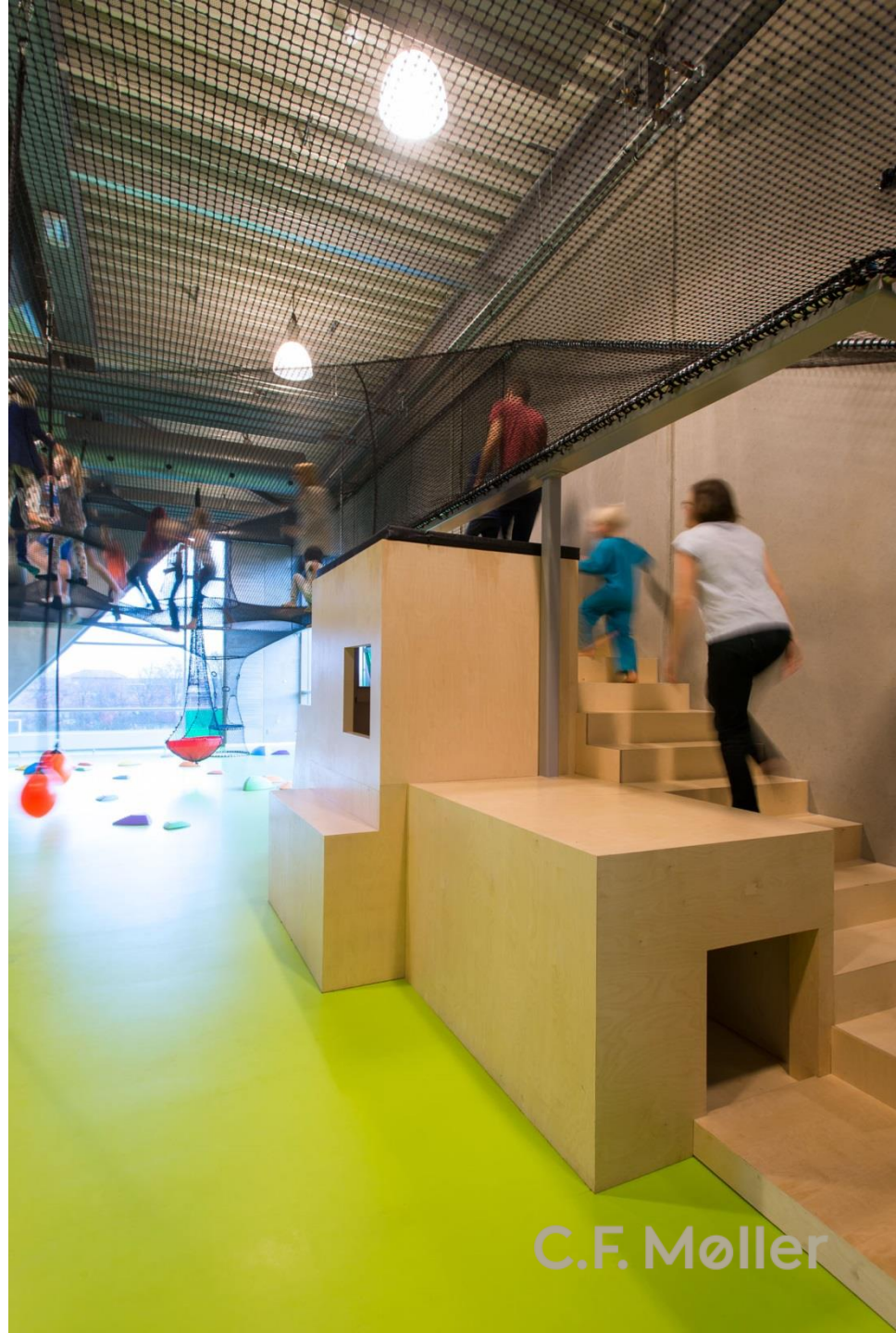




C.F. Møller

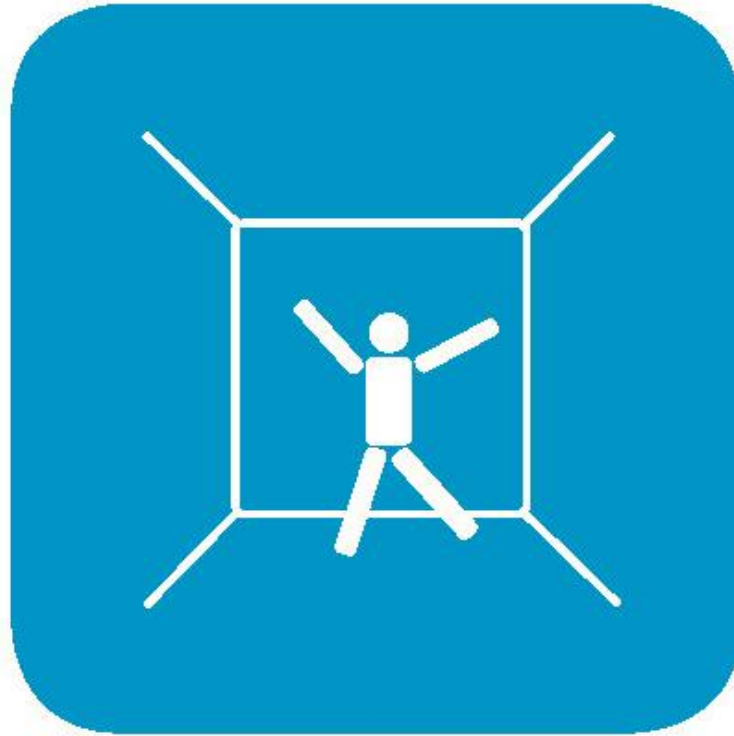


C.F. Møller



C.F. Møller





## Inspirierende Räume



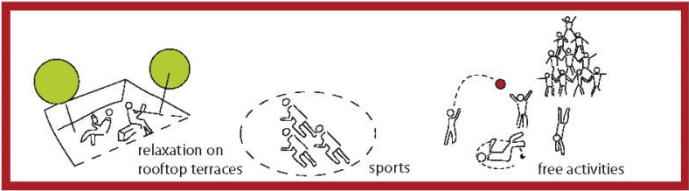


C.F. Møller

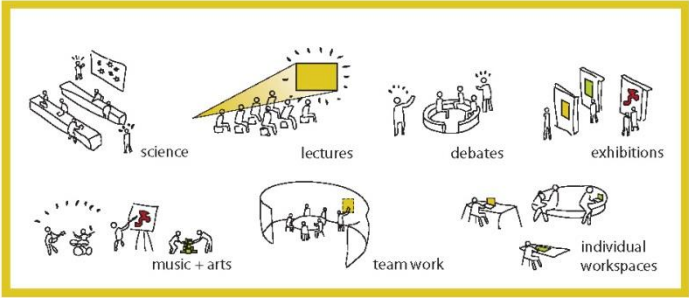




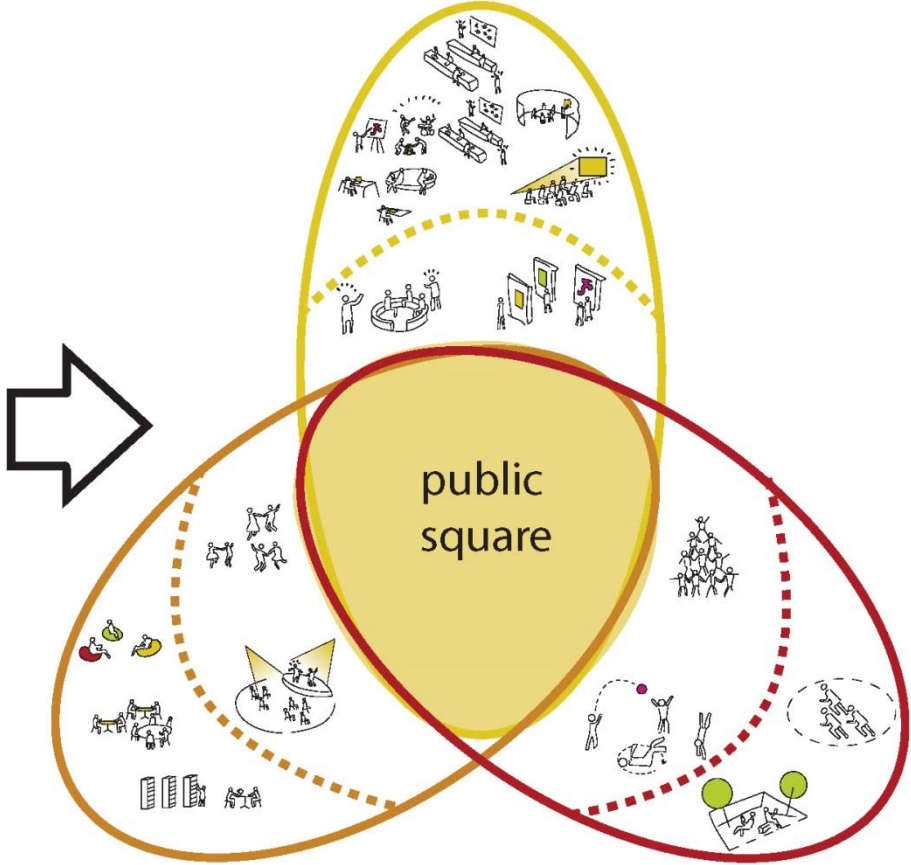
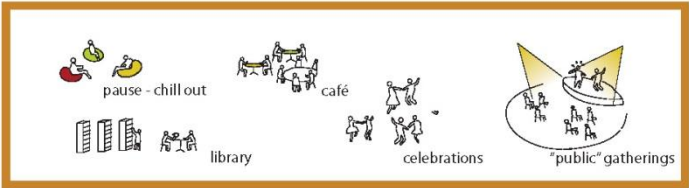
recreational



academic



social



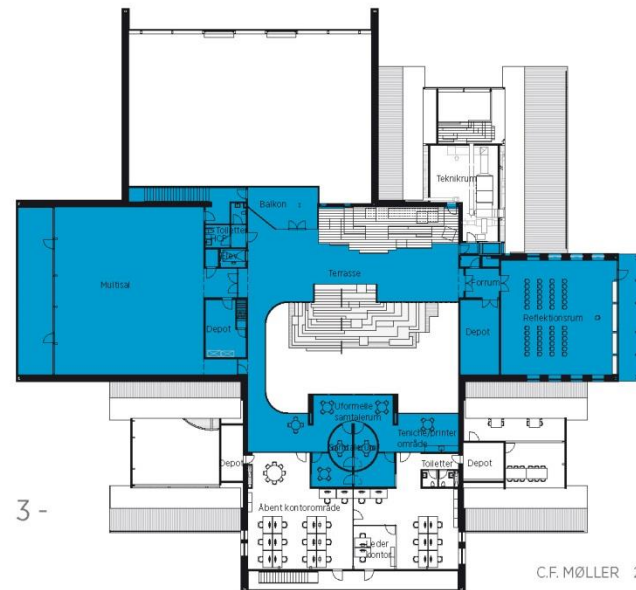
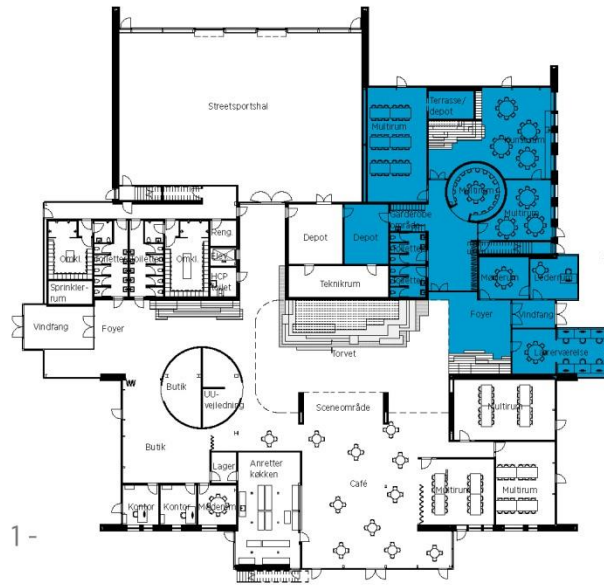


# SITUATIONSPLAN











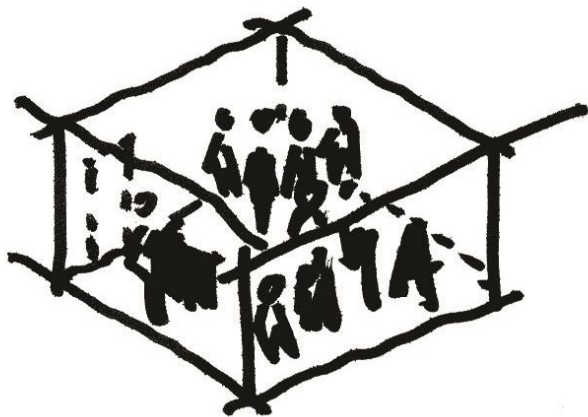








## Entwicklungsstufen



Einschulung - homebase



Zwischenstufe - homebase



Oberstufe - homebase





C.F. Møller





C.F. Møller



C.F. Møller



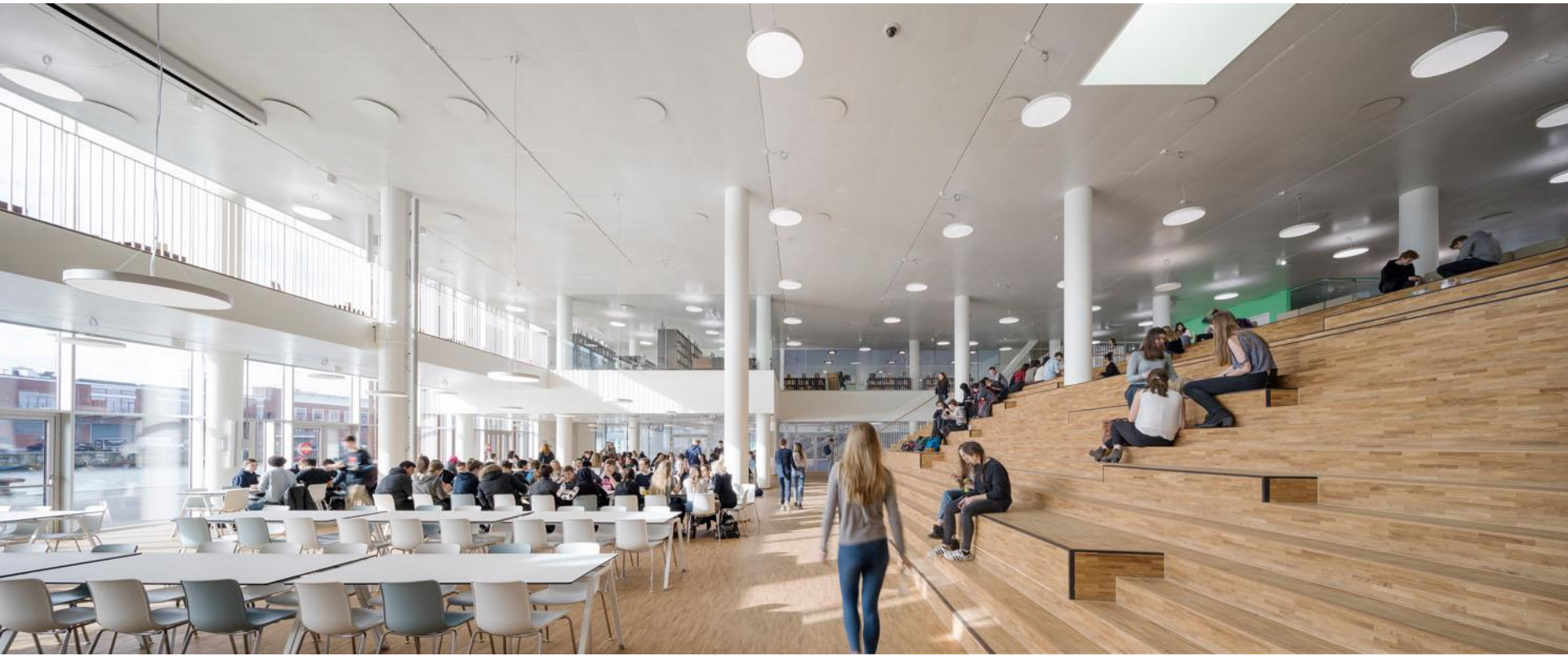
C.F. Møller



C.F. Møller



C.F. Møller



C.F. Møller



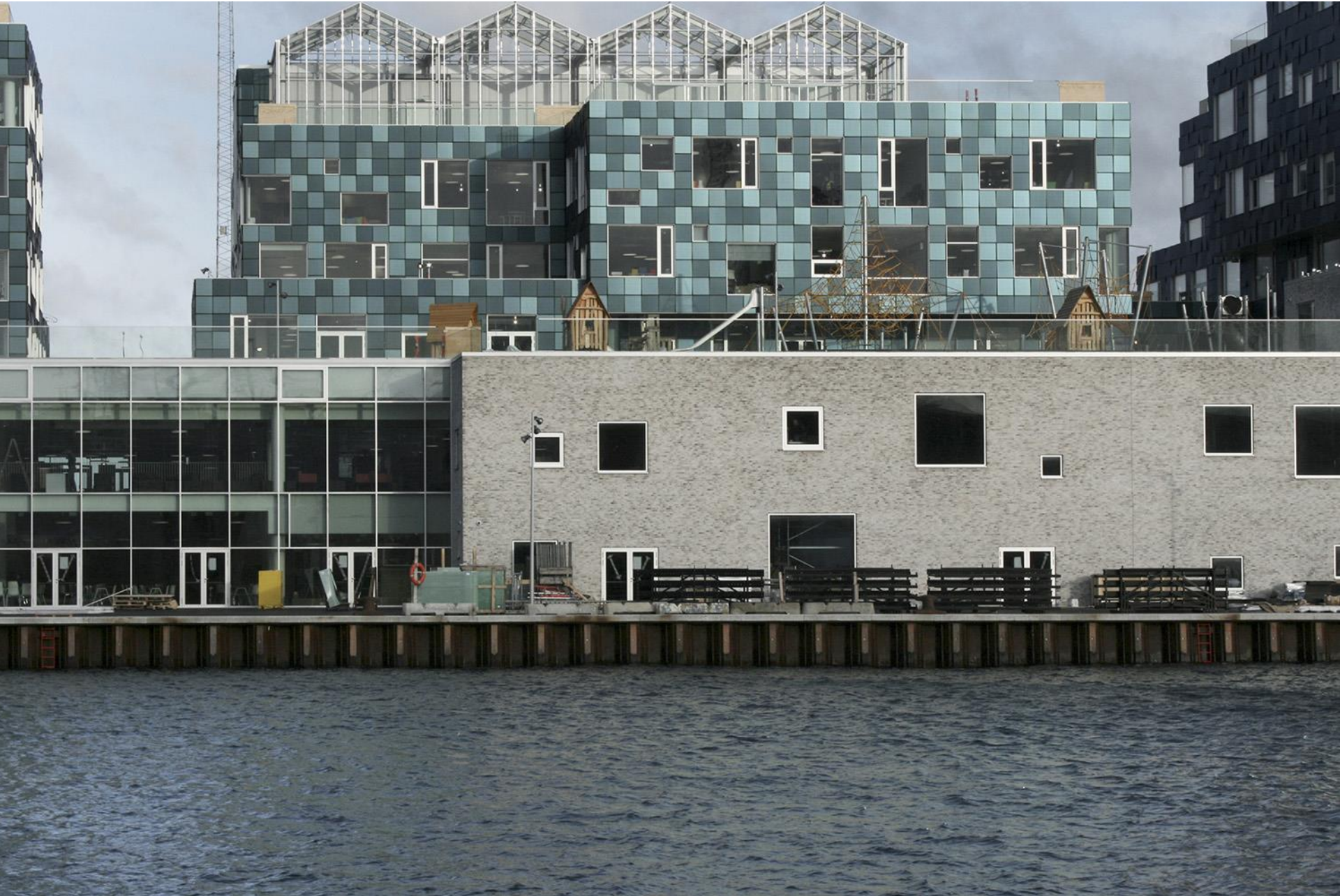




C.F. Møller



C.F. Møller



C.F. Møller



C.F. Møller



C.F. Møller



C.F. Møller



C.F. Møller













C.F. Møller



C.F. Møller



C.F. Møller









C.F. Møller



[WWW.CFMOLLER.COM](http://WWW.CFMOLLER.COM)

